

Clarke®



DIESEL/PARAFFIN HEATER

MODEL NO: XR35

PART NO: 6920197

OPERATION & MAINTENANCE INSTRUCTIONS

UK
CA | CE



ORIGINAL INSTRUCTIONS

DL0425 Rev 1

INTRODUCTION

Thank you for purchasing this CLARKE product. Before attempting to use this product, please read this manual thoroughly and follow the instructions carefully.

GUARANTEE

This product is guaranteed against faulty manufacture for a period of 12 months from the date of purchase. Please keep your receipt which will be required as proof of purchase. This guarantee is invalid if the product is found to have been abused or tampered with in any way, or not used for the purpose for which it was intended.

Faulty goods should be returned to their place of purchase, no product can be returned to us without prior permission.

This guarantee does not effect your statutory rights.

ENVIRONMENTAL RECYCLING POLICY



Through purchase of this product, the customer is taking on the obligation to deal with the WEEE in accordance with the WEEE regulations in relation to the treatment, recycling & recovery and environmentally sound disposal of the WEEE.

In effect, this means that this product must not be disposed of with general household waste. It must be disposed of according to the laws governing Waste Electrical and Electronic Equipment (WEEE) at a recognised disposal facility.

THE FOLLOWING TABLE ADDRESSES THE INFORMATION REQUIREMENTS OF REG.2015/1188

Contact Details: Clarke International Ltd, Hemnall St, Epping, Essex, CM16 4LG Tel: 0208 988 7400			
Model Number	XR35		
Indirect Heating Functionality	No		
Direct Heat Output	10kW		
Indirect Heat Output	N/A		
Minimum permissible total flue length (vertical + horizontal)	N/A		
Fuel	Nitrogen oxides (NO _x) Emissions		
	Value	Unit	
Select Fuel Type: Liquid Diesel Oil	122.60	mg/kWh _{input} (GCV)	
Item	Symbol	Value	Unit
Heat output			
Nominal heat output	P _{nom}	10	kW
Minimum heat output	P _{min}	N/A	kW
Auxiliary electricity consumption			
At nominal heat output	e _{lmax}	0.09	kW
At minimum heat output	e _{l min}	N/A	kW
In standby mode	e _l	0.0004	kW
Power consumption			
In off mode	P ₀	0.00	W
In standby mode	P _{sm}	0.00	W
In idle mode	P _{idle}	N/A	W
In networked standby mode	P _{nsm}	N/A	W
Standby mode with display of information or status			No
Permanent pilot flame power requirement			
Pilot flame power requirement (if applicable)	P _{pilot}	N/A	kW
Efficiency (NCV)			
Useful efficiency at nominal heat output	η _{th, nom}	87.70	%
Useful efficiency at minimum heat output	η _{th, min}	N/A	%

Seasonal space heating energy efficiency	n_s	N/A	%
Type of heat output/room temperature control (select one)			
Single stage heat output, no temperature control			Yes
Two or more manual stages, no temperature control			No
With mechanical thermostat temp control			No
With electronic temperature control			No
Electronic temperature control with day timer			No
Electronic temperature control with week timer			No
Other control options (multiple selections possible)			
Room temperature control with presence detection			No
Room temperature control with open window detection			No
Room temperature control with distance control option			No
Room temperature control with adaptive start control			No
Room temperature control with working time limitation			No
Room temperature control with black bulb sensor			No
Room temperature control with self-learning functionality			No
Room temperature control with control accuracy			No

FUNCTION AND OPERATING PARAMETERS

This is a forced air heater meaning that a blower or fan pushes the air through the heater. Proper combustion depends upon the air flow.

Therefore, the heater must not be modified or operated with parts removed or missing. Likewise, safety systems must not be circumvented or modified in order to operate the heater.

This heater is intended for drying and the warming of commercial/industrial buildings where adequate ventilation is provided.

This heater is not intended;

- It must be operated as prescribed in the operating manual.
- It is not intended to be used for domestic use or for the heating of habitable areas.
- It is not intended to be used to reach and maintain a certain level of human thermal comfort within an enclosed space in which the heater is situated.
- It is not intended to be used in enclosed areas with restricted ventilation.
- It is not for use in areas with high levels of fluctuating drafts.
- **DO NOT** use for warming animals or live stock.

SAFETY WARNINGS



CAUTION: DUE TO THE HIGH SURFACE AND EXHAUST TEMPERATURES, ADULTS, CHILDREN AND ANIMALS MUST KEEP CLEAR OF THE UNIT TO AVOID BURNS OR CLOTHING IGNITION.

Your safety is important to you and to others, so please read these instructions before you operate this heater.

1. Failure to comply with the precautions and instructions provided with this heater can result in death, serious bodily injury and property loss or damage from the hazards of fire, explosion, burns, asphyxiation, carbon monoxide poisoning, and/or electric shock.
2. Only persons who understand and follow the instructions should use or service this heater.
3. When used, the heater should rest on a non-combustible floor extending 3 feet or more beyond the heater in all directions.
4. **NOT** for home or recreational vehicle use.
5. **DO NOT** use petrol or other volatile fuels. **ONLY** use diesel or paraffin.
6. Turn off and disconnect the heater from the power supply before adding fuel.
7. **ALWAYS** re-fuel in a well ventilated area, away from any open flame or other sources of ignition.
8. **DO NOT** use an external fuel source.
9. **DO NOT** use the heater where flammable liquids or vapours may be present.
10. **DO NOT** start the heater when the combustion chamber is hot.
11. Plug the electrical cable into a properly grounded mains socket.
12. **DO NOT** leave the heater unattended when in use.
13. **DO NOT** start or use the heater if there is unburned fuel in the combustion chamber.
14. **DO NOT** use if dropped. Check the heater thoroughly for damage. **NEVER** operate a damaged heater.
15. This heater is for indoor use only.
16. **DO NOT** use this heater in the immediate surrounds of a bath, a shower or a swimming pool.
17. **DO NOT** use this heater in small rooms when they are occupied by persons not capable of leaving the room on their own unless constant supervision is provided.

18. Use in well ventilated spaces and provide at least 1.05 sq. ft. of air opening near the floor and near the ceiling directly to outdoors. Increase air openings for each additional heater.
19. **ALWAYS** keep combustibles, like textiles, paper and wood at least 8 ft. (2.4 m) from all sides of the heater. Locate the heater 10 ft. (3 m) from canvas or plastic coverings and secure them to prevent movement.
20. Make sure that the heater is not directly exposed to rain or water spray.
21. **NEVER** use in living spaces and/or where children or animals may be present.
22. **DO NOT** use for warming animals or live stock.
23. **DO NOT** use with ductwork. **DO NOT** restrict air inlet or exit.
24. **DO NOT** move or service the heater while hot or in operation.
25. Use only in accordance with local regulations and relevant building codes.
26. This heater is only intended for use in industrial, commercial and building industries, it is **NOT** to be used by children or persons with reduced physical, sensory or mental capabilities, or lack of experience and knowledge.
27. If the power supply cable is damaged, it must be replaced by the manufacturer, its service agent, or similarly qualified persons in order to avoid a hazard.
28. **DO NOT** use this heater with a programmer, timer, separate remote control system or any other device that switches the heater on automatically, since a fire risk exists if the heater is covered or positioned incorrectly.
29. **BYSTANDERS:** When the heater is to be operated in the presence of other people the user is responsible for informing those present of the safety precautions and of the hazards involved.

SAFETY SYMBOLS

Please read all of the safety and operating instructions carefully before using this product. The following safety symbols may be found on the product.

	GENERAL HAZARD WARNING		HOT SURFACE, DO NOT TOUCH
	ALWAYS READ THIS MANUAL BEFORE USE		DO NOT COVER

GENERAL PRECAUTIONS

Even though this heater operates very close to 100 percent combustion efficiency, it still produces small amounts of carbon monoxide.

- Carbon Monoxide (CO) is toxic.
- Pregnant women, persons with a heart or lung condition, anemia or under the influence of alcohol, or those at high altitude, are more likely to be effected by Carbon Monoxide.
- CO can build up in a confined space and failure to provide adequate ventilation can be fatal.

The early symptoms of asphyxiation caused by inadequate ventilation are:

- headache
- nausea
- dizziness
- dry mouth or sore throat

Should anyone show these symptoms, they must **GET FRESH AIR IMMEDIATELY**. Turn off the heater and have it serviced before using again.

Be sure to follow all warnings in this manual.

WE RECOMMEND THE USE OF A CARBON MONOXIDE DETECTOR

MINIMUM FRESH AIR OPENING REQUIREMENTS

These heaters are specified as having a minimum fresh air opening requirement of 1.05ft².

OPERATING SPACE

DO NOT obstruct the air intake to the heater and allow the following minimum clearances from any surface.

Outlet: 8 feet (2.4 m)

Sides: 6 feet (1.8 m)

Top: 6 feet (1.8 m)

Rear: 2 feet (0.6 m)

ELECTRICAL CONNECTIONS




WARNING: READ THESE ELECTRICAL SAFETY INSTRUCTIONS THOROUGHLY BEFORE CONNECTING THE PRODUCT TO THE MAINS SUPPLY.

Connect the mains lead to a standard, 230 Volt (50Hz) electrical supply through an approved BS1363/A plug fitted with a BS1362 7 amp fuse.

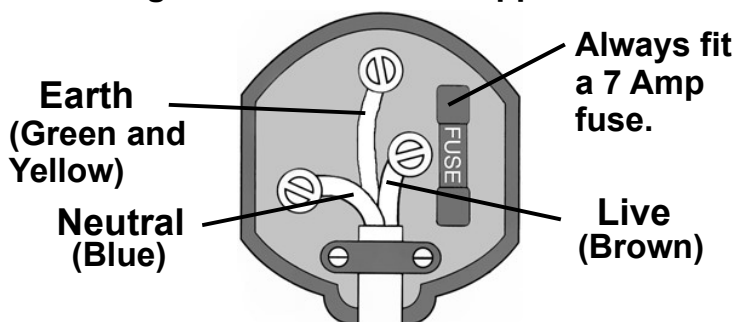
If the plug has to be changed because of damage, it must be removed and a replacement fitted, following the wiring instructions shown below. The old plug must be discarded safely, as insertion into a power socket could cause an electrical hazard.



**WARNING: WIRES IN THE MAINS LEAD ARE COLOURED IN ACCORDANCE WITH THE FOLLOWING CODE:
GREEN/YELLOW = EARTH, BLUE = NEUTRAL, BROWN = LIVE.**

- The BLUE wire must be connected to the terminal marked N or coloured black.
- The BROWN wire must be connected to the terminal marked L or coloured red.
- The YELLOW AND GREEN wire must be connected to the terminal marked E or  or coloured green.

Plug must be BS1363/A approved.



Ensure that the outer sheath of the cable is firmly held by the clamp

We strongly recommend that this machine is connected to the mains supply through a Residual Current Device (RCD)

If you are not sure, consult a qualified electrician. DO NOT try to do any repairs.

PREPARATION

Remove heater from carton and remove all protective material which may have been applied to the heater for shipment.

FUEL TYPES

Diesel or paraffin are the only fuels that should be used in this heater.

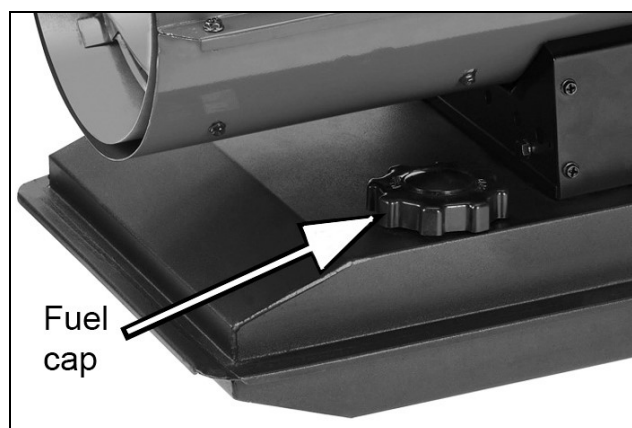
FILLING THE FUEL TANK

IMPORTANT: Before filling the fuel tank the first time or after extended storage periods, drain the fuel tank of any moisture or condensation.

1. Follow all of the "Safety Warnings".
2. Remove the fuel cap.

NOTE: If you lose the fuel cap a replacement must be obtained before use. This is available from your local CLARKE service department.

3. Fill the fuel tank with clean diesel or paraffin.
 - In cold weather, condensation may develop in the tank if the tank is empty and it is recommended that a tablespoon of de-icer be added for each gallon of fuel in the tank.
 - When filling the heater, make sure that the heater is level and do not overfill. Use a funnel or can with a long fill spout.
 - Fill with a minimum of 4 litres of fuel at all times to avoid fuel starvation if the supply is exhausted.
 - ALWAYS clean up any fuel spillages before starting the heater.



HEATER LOCATION

- Locate heater at a safe distance from combustible materials, see page 7.
- When used, the heater should rest on suitable non-combustible floor extending 3 ft or more beyond the heater in all directions.
- Only operate on a flat level and stable surface.

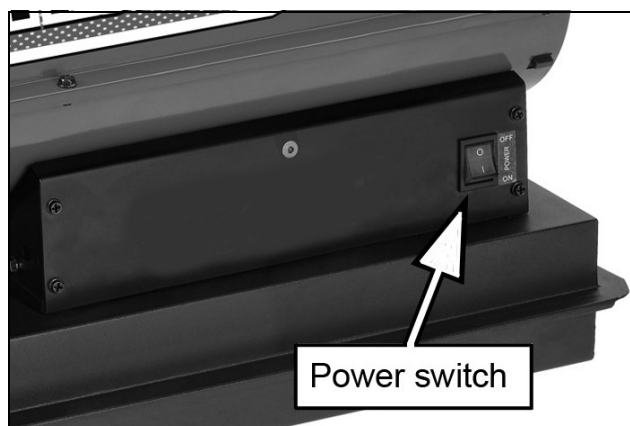
OPERATION

START UP



WARNING: DO NOT START THE HEATER WHEN EXCESS FUEL HAS ACCUMULATED IN THE COMBUSTION CHAMBER.

1. Make sure power switch is in the OFF position.
2. Plug the heater into the mains power supply.
3. Start heater by setting the power switch to the ON position.
 - The switch illuminates in the ON position.



SHUT DOWN

1. Set the power switch to the OFF position.
2. For extended shutdown unplug the heater from the mains supply.

AUTOMATIC SAFETY FEATURES

This heater has the following safety features that will automatically shut down the heater if they are activated:

1. Thermal Cut Out: Will shut down if the unit overheats.
2. Flame Out: Will shut down if the flame goes out.

If any of these features are activated, let the heater cool down for 5 minutes before trying to restart the heater.

MAINTENANCE



WARNING: TO PREVENT PERSONAL INJURY, UNPLUG THE HEATER FROM THE MAINS SUPPLY BEFORE SERVICING.

DAILY SCHEDULE

GENERAL

1. Make a general visual inspection of the heater for loose or damaged parts.
2. Check nuts and bolts are secure.
3. Damaged parts should be repaired or replaced before using the heater again.
4. Check heater operation to be sure it is operating normally as follows:
 - The flame is contained within the heater.
 - The flame is essentially yellow.
 - There is no strong disagreeable odour, eye burning or other physical discomfort.
 - There is no smoke or soot internal or external to the heater.
 - There are no unplanned or unexplained shut downs of the heater

REMOVE DUST

Clean the heater twice a season (more often under dusty conditions).

1. Remove accumulated dust from the transformer, burner, motor and fan blades with compressed air. ALWAYS protect your eyes if using compressed air.
2. Wipe clean with a clean dry cloth.

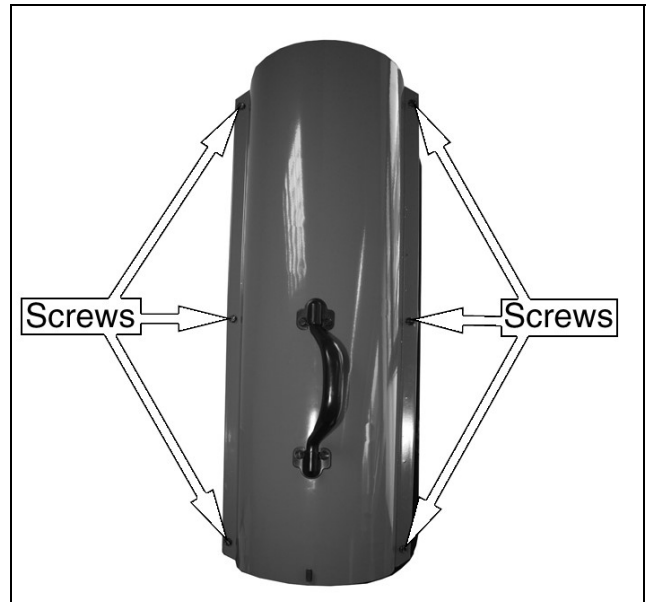
FUEL TANK (EVERY 500 HOURS)

Clean twice a season (during frequently used periods, clean twice a month). Drain and flush the fuel tank with clean fuel.

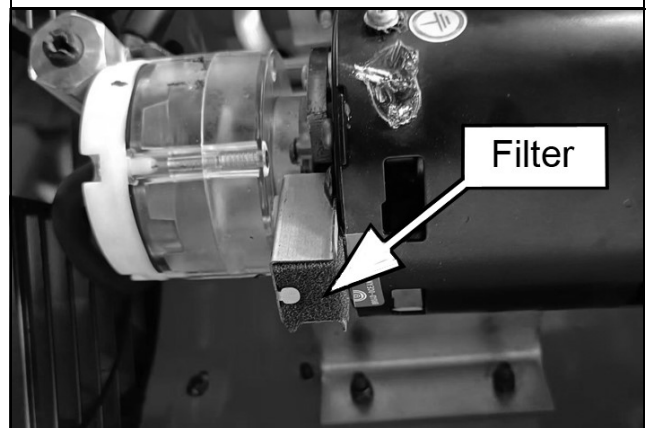
AIR INLET FILTER

A dirty air filter will cause an imbalance in the air-fuel mixture. The best indication that this condition exists is an increase in odour or difficulty getting your heater to ignite. This heater should never be operated without the filter in place. If required, clean the filter as follows.

- Make sure that the plug is removed from the power supply before carrying out any maintenance.
1. Remove the six screws shown and remove the top cover of the heater.



2. Pull the filter away from the motor.
3. To clean the air intake filter.
 - Remove and wash the filter element with a mild detergent.
 - Dry thoroughly and refit.
 - Do not oil the filter element. If your heater is used where there is considerable dust or dirt.
 - Clean as often as necessary (at least approximately every 500 hrs).



NOTE: If the filter is damaged or extremely dirty, a replacement filter of the same type should be fitted, this is available from your local CLARKE service department.

4. Replace the filter cover and secure using the screws removed in step 1.

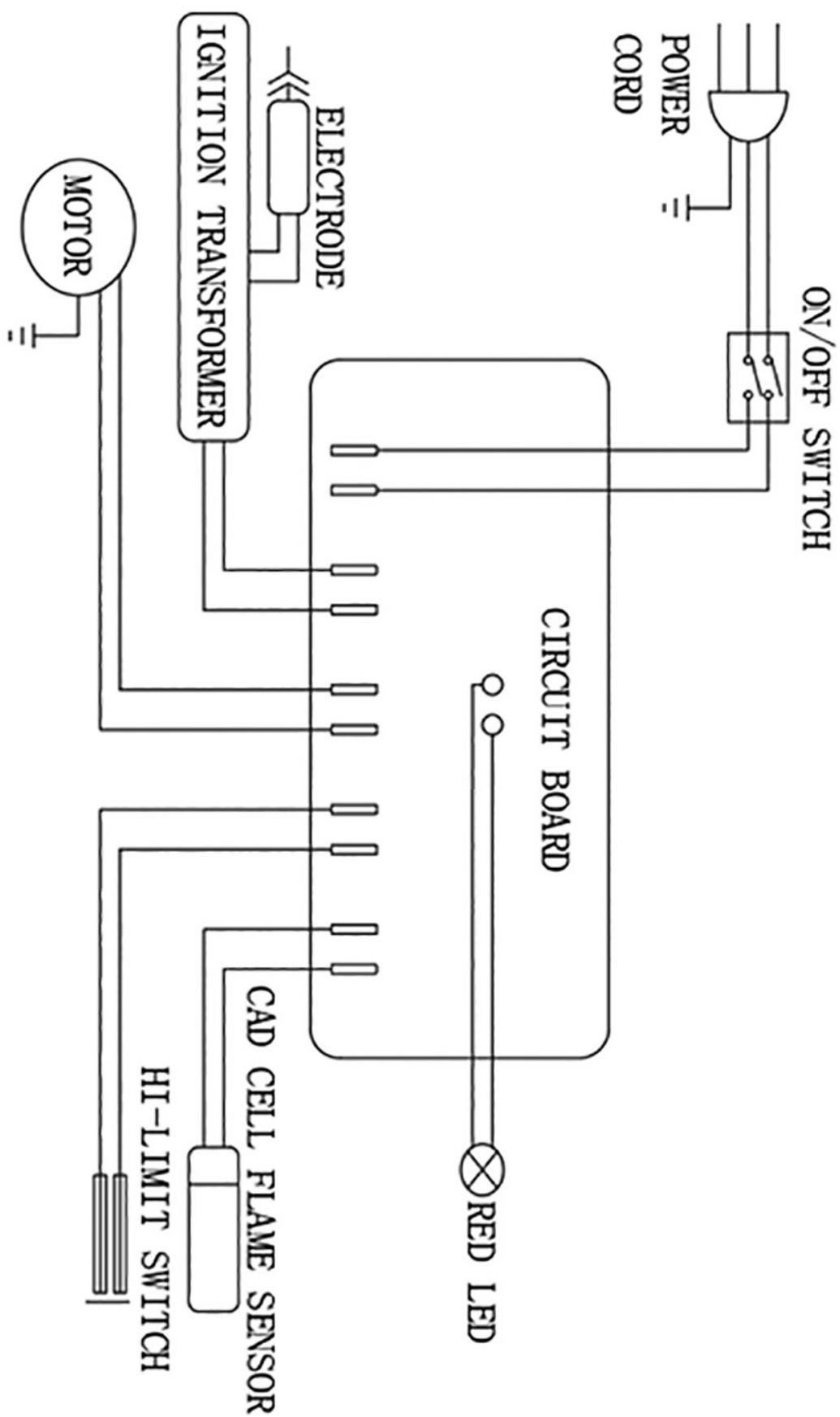
STORAGE

1. Drain any residual fuel / condensate from the fuel tank.
2. Store the heater in a dry location free from fumes or dust.

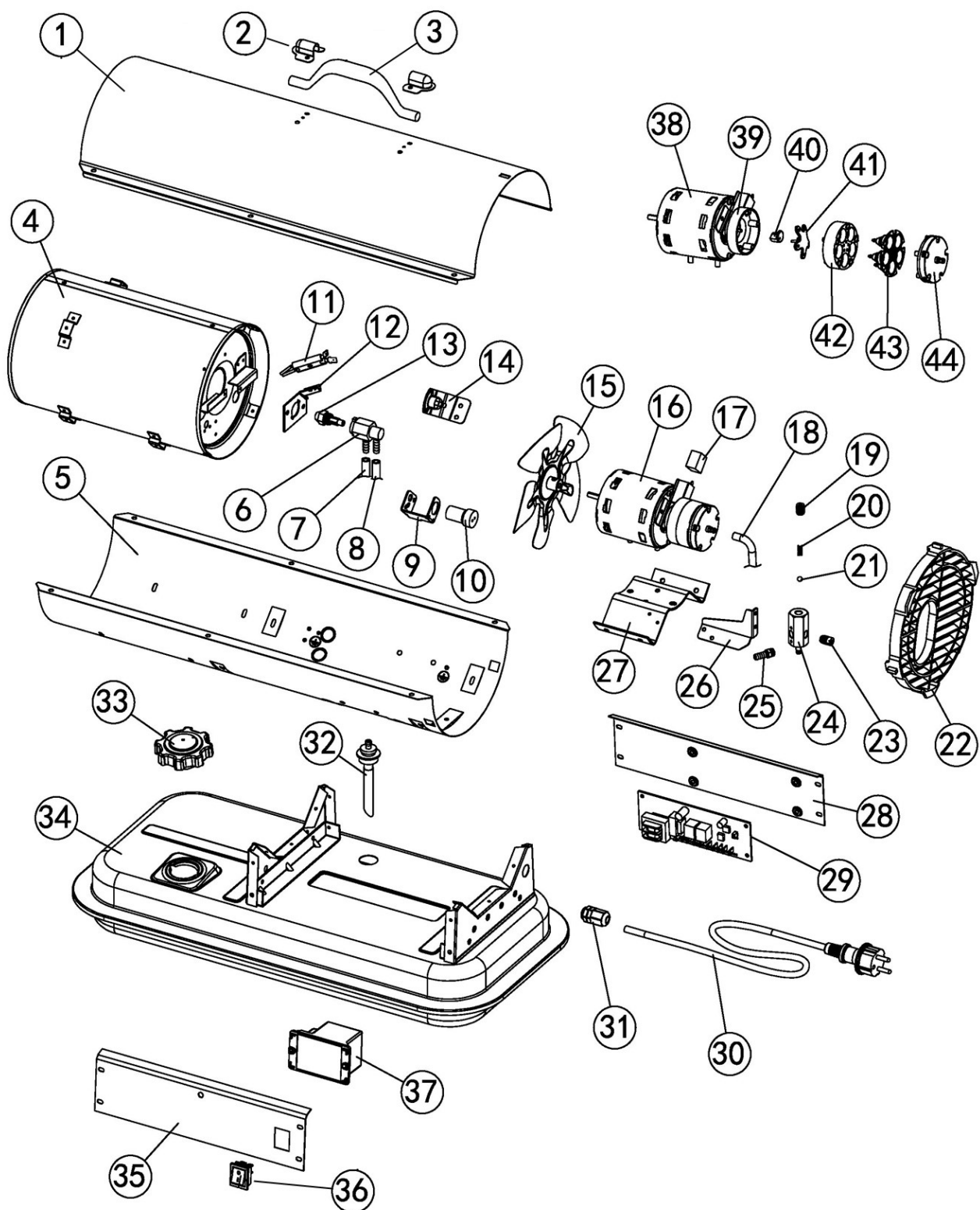
TROUBLE SHOOTING

LED	OPERATION	TROUBLE SHOOTING
Steady ON	System Check	System performing self test. No action required.
2 Flashes	No flame detected - heater fails to start.	<ol style="list-style-type: none"> 1. Check fuel level. 2. Check the mains plug is correctly fitted and that the fuse inside it has not blown. 3. Return to CLARKE service department for repair.
3 Flashes	High limit switch failure (unit has overheated)	<p>Make sure heater is cooled down,</p> <ol style="list-style-type: none"> 1. Make sure that the power switch is set to the OFF position. 2. Wait 5 minutes 3. Start heater by setting the power switch to the ON position.
4 Flashes	Flame sensor failure	Return to CLARKE service department for repair.

WIRING DIAGRAM



COMPONENT PARTS



PARTS LIST

1	Upper shell
2	Handle mounting
3	Handle
4	Combustion chamber
5	Lower shell
6	Nozzle adaptor
7	Air tube
8	Fuel tube
9	Cad cell support
10	CAD cell flame sensor
11	Ignition electrode
12	Electrode support
13	Nozzle
14	High limit switch
15	Fan

16	Complete air pump
17	Inlet filter
18	Inlet filter air tube
19	Pump adjust screw
20	Spring (pressure adjusting)
21	Ball (pressure adj)
22	Grille
23	Nylon pipe plug
24	Pressure adjusting adaptor
25	Hose adaptor
26	Support bracket
27	Motor mount
28	Right panel
29	Flame control unit
30	Power cable

31	Strain relief bush
32	Fuel filter
33	Fuel cap
34	Fuel tank
35	Left panel
36	Power switch
37	Transformer
38	Motor
39	Air pump base
40	Air pump coupling
41	Air pump swing arm
42	Air pump cylinder
43	Air pump plunger
44	Air pump cover

SPECIFICATIONS

Model	XR35
Fuel type	Diesel or Paraffin
Fuel Tank Capacity:	12 L
Minimum Fuel Level for startup	4 L
Fuel consumption:	0.96 L/hr
Approx Running Time:	12.5 hr
Heat Output	10 kW
Burn Rate: (Btu/hr.)	35,000
Air Pump Pressure	0.14 bar
Air Delivery	405 m ³ /h
Electrical input:	230 V ~ 50 Hz
Input Power	106 W
Input Current	0.7 A
Duty Cycle	S1 (Continuous)
Max.Outlet Temp:	1300°F (704°C)
RPM @ 230 V with no load	2930
Ignition system:	Electric Ignition
Primary Safety Controls	Flame failure device & thermal cutout
Ingress Protection (IP Rating)	IP00
Weight (kg)	10 kg
Dimensions (DxWxH)mm	627 x 309 x 380

DECLARATION OF CONFORMITY - UK



Hemnall Street, Epping, Essex, CM16 4LG

DECLARATION OF CONFORMITY

This is an important document and should be retained.

We hereby declare that this product(s) complies with the following legislation:

2009/125/EC	<i>Ecodesign Directive</i>
2014/30/EU	<i>Electromagnetic Compatibility Directive</i>
2014/35/EU	<i>Low Voltage Directive</i>
2011/65/EU	<i>Restriction of Hazardous Substances (RoHS) Directive</i>

The following standards have been applied to the product(s):

EN IEC 60335-2-102:2024+A11:2024, EN IEC 55014-1:2021, EN IEC 55014-2:2021, EN 62233:2008,
EN IEC 61000-3-2:2019+A1:2021+A2:2024, EN 61000-3-3:2013+A1:2019+A2:2021, EN 13842:2004,
IEC 62321-7-1:2015, IEC 62321-7-2:2017, IEC 62321-5:2013, IEC 62321-6:2015, IEC 62321-8:2017,
EN 60335-1:2012+A11:2014+A13:2017+A1:2019+A2:2019+A14:2019+ A15:2021+A16:2023,
IEC 62321-3-1:2013, IEC 62321-4:2013+AMD1:2017

The technical documentation required to demonstrate that the product(s) meet(s) the requirement(s) of the aforementioned legislation has been compiled and is available for inspection by the relevant enforcement authorities.

The UKCA mark was first applied in: 2024

Product Description: Diesel/Paraffin Space Heater
Model Number(s): XR35
Serial/Batch Number: Refer to product/packaging label
Date of Issue: 15/04/2025

Signed:

J.A Clarke

Director

XR35 UKCA Clarke DOC 041525

Page 1 of 1

DECLARATION OF CONFORMITY - CE



Fitzwilliam Hall, Fitzwilliam Place, Dublin 2

DECLARATION OF CONFORMITY

This is an important document and should be retained.

We hereby declare that this product(s) complies with the following legislation:

2009/125/EC	<i>Ecodesign Directive</i>
2014/30/EU	<i>Electromagnetic Compatibility Directive</i>
2014/35/EU	<i>Low Voltage Directive</i>
2011/65/EU	<i>Restriction of Hazardous Substances (RoHS) Directive</i>

The following standards have been applied to the product(s):

EN IEC 60335-2-102:2024+A11:2024, EN IEC 55014-1:2021, EN IEC 55014-2:2021, EN 62233:2008, EN IEC 61000-3-2:2019+A1:2021+A2:2024, EN 61000-3-3:2013+A1:2019+A2:2021, EN 13842:2004, IEC 62321-7-1:2015, IEC 62321-7-2:2017, IEC 62321-5:2013, IEC 62321-6:2015, IEC 62321-8:2017, EN 60335-1:2012+A11:2014+A13:2017+A1:2019+A2:2019+A14:2019+ A15:2021+A16:2023, IEC 62321-3-1:2013, IEC 62321-4:2013+AMD1:2017

The technical documentation required to demonstrate that the product(s) meet(s) the requirement(s) of the aforementioned legislation has been compiled and is available for inspection by the relevant enforcement authorities.

The CE mark was first applied in: 2024

Product Description: Diesel/Paraffin Space Heater
Model Number(s): XR35
Serial/Batch Number: Refer to product/packaging label
Date of Issue: 15/04/2025

Signed:

J.A Clarke

Director

XR35 CE Clarke DOC 041525

Page 1 of 1

A SELECTION FROM THE VAST RANGE OF

Clarke®

QUALITY PRODUCTS



AIR COMPRESSORS
From DIY to industrial, Plus air tools, spray guns and accessories.

GENERATORS
Prime duty or emergency standby for business, home and leisure.

POWER WASHERS
Hot and cold, electric and engine driven - we have what you need

WELDERS
Mig, Arc, Tig and Spot. From DIY to auto/industrial.

METALWORKING
Drills, grinders and saws for DIY and professional use.

WOODWORKING
Saws, sanders, lathes, mortisers and dust extraction.

HYDRAULICS
Cranes, body repair kits, transmission jacks for all types of workshop use.

WATER PUMPS
Submersible, electric and engine driven for DIY, agriculture and industry.

POWERTOOLS
Angle grinders, cordless drill sets, saws and sanders.

STARTERS/CHARGERS
All sizes for car and commercial use.



PARTS & SERVICE:

0208 988 7400

Parts Enquiries
Parts@clarkeinternational.com

Servicing & Technical Enquiries
Service@clarkeinternational.com

SALES: UK 01992 565333 or Export 00 44 (0)1992 565335

Clarke® INTERNATIONAL Hemnall Street, Epping, Essex CM16 4LG
www.clarkeinternational.com